



# UNSW Sydney Online Award

Our scholarship program offers **up to 35% fee savings**, enabling you to graduate with a master's degree from a global top 20 university.

\*QS World University Rankings, 2026

\*Indicative fees savings. Please see more detail inside guide

CRICOS Provider Code 00098G

In partnership with:



# Contents

<u>Learn at UNSW – a world leader</u>	03
<u>How the award works</u>	05
<u>Eligible programs</u>	06
<u>Eligibility requirements</u>	07
<u>Fee savings</u>	08
<u>Get in touch</u>	09
<u>Articulation pathway options</u>	10

# Stand out with global top 20 university that opens doors in Singapore and beyond

UNSW Sydney and Singapore Institute of Management (SIM) have partnered to offer an exclusive award to fully online students who start their postgraduate study with SIM and articulate to selected UNSW Online master's degrees.

## Globally recognised leading university

Backed by world rankings and proven employment outcomes, a UNSW master's degree prepares you for the challenges ahead, providing the knowledge, tools and global alumni network to thrive. It's one of only two Australian universities in the global top 20 and a part of the prestigious Group of Eight leading universities in Australia.



### Global top 20 university

Ranked 2nd best university in Australia and 20th globally.

*QS World University Rankings, 2026*



### A Group of Eight university

UNSW is a member of the prestigious coalition of Australia's leading research-intensive universities.

## Future-proof your skills with career-connected learning

UNSW designs programs to match real-world needs. Whether you're pivoting careers or deepening your expertise, every course is designed to give you immediately applicable learnings that strengthen your professional impact, from day one.



### Most employable graduates

Ranked 1st in Australia and 29th globally for employment outcomes.

*QS World University Rankings, 2026*



### Highest graduate salaries

Highest median graduate salaries of Go8 universities.

*QILT Graduate Outcomes Survey (medium-term), 2022*



## Study fully online to balance work and life priorities

Study 100% online with a program designed to balance work and life. Both SIM and UNSW programs are accelerated learning formats with 6 intakes a year (hexamester model). You study one course per term with 6 terms per year, so you graduate faster. A master's degree can be completed in as little as 2 years, part time.

## Receive 1:1 personalised support

Support when you need it, every step of the way. Every student UNSW student is supported by a Student Success advisor, who is just a call or email away. Plus, the learning platform allows you to easily connect with other students, and your course facilitator.

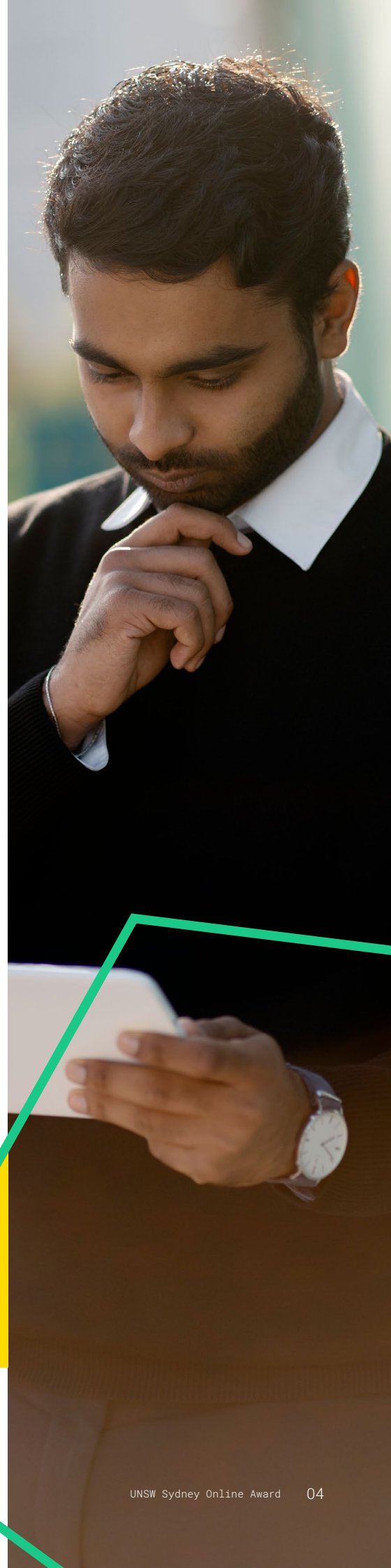
**Important note:** Students studying UNSW Online master's degrees are not eligible for an Australian student visa (subclass 500) or a Temporary Graduate visa (subclass 485).

Book a 15-minute chat with a student advisor for personalised advice on tuition fees.

**Book now** →

*\*Indicative fee savings. Please see page 09 for more detail.*

*^Information accurate at time of publishing.*



# How the award works

## The only award of its kind in Singapore with a global top 20 Australian university.^

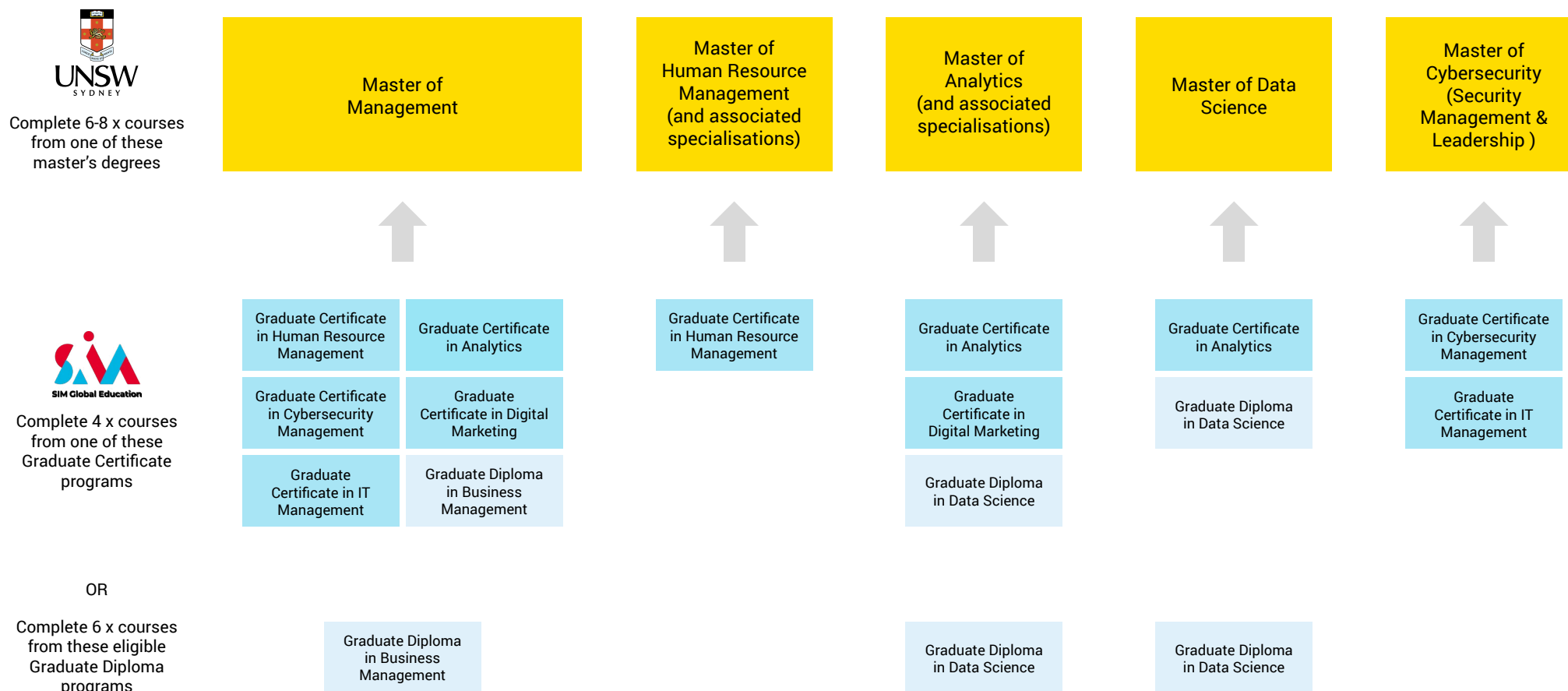
To be eligible for the award, you first complete 4-6 courses from selected SIM programs. Upon successful completion with weighted average mark (WAM) of 65% or higher, you can articulate to selected UNSW Online master's degrees. You then complete 6-8 UNSW courses and graduate with a prestigious master's qualification from the #2 university in Australia, #20 in the world.

There are two key articulation models\*

4 + 8 Models	4 x courses from a SIM Graduate Certificate	+	8 x courses from a UNSW master's degree	=	Graduate with 2 qualifications: UNSW master's degree SIM Graduate Certificate
	4 x courses from a SIM Graduate Diploma	+	8 x courses from a UNSW master's degree	=	Graduate with a UNSW master's degree
6 + 6 Model	6 x courses from a SIM Graduate Diploma	+	6 x courses from a UNSW master's degree	=	Graduate with a UNSW master's degree

# Eligible programs

Successfully complete a total of 12 courses to graduate with a master's degree. For each master's degree, there specific articulation pathways, which are detailed within this guide.



Articulation pathways

[See page 10](#)

[See page 16](#)

[See page 20](#)

[See page 28](#)

[See page 32](#)

# Award eligibility

1. **Admission to SIM:** First, meet the academic and English language entry requirements for your selected SIM program.
2. **Complete SIM program:** Complete the required number and combination of SIM courses with a weighted average mark (WAM) of 65% or higher to meet UNSW's academic entry requirements.
3. **Application to UNSW:** Apply to articulate to the corresponding UNSW master's degree.
4. **Admission to UNSW:** Upon successful admission, receive the 20% fee savings on the remaining UNSW courses to graduate with a master's degree.

## Please note:

- Students studying UNSW Online master's degrees are not eligible for an Australian student visa (subclass 500) or a Temporary Graduate visa (subclass 485).
- The award is only available to non-Australian and New Zealand citizens.



# Save on tuition fees

Start your study with SIM, articulate to UNSW and receive 20% fee savings on the remaining UNSW courses for the master's degree. This is an exclusive opportunity only for SIM students. You graduate with a prestigious UNSW master's degree and up to 35% fee savings in total versus undertaking the full UNSW degree, from start to finish.

Fee savings example based on 2025 tuition fees\*

UNSW's master's degree typically	=	12 x UNSW courses (\$4,310 SGD per course)	=	\$51,045 SGD
----------------------------------	---	---	---	--------------

Via SIM E-learning with UNSW Online Award:

4 x SIM courses (\$1,907.50 SGD per course)	+	8 x UNSW courses <del>(\$4,310</del> \$3,404 SGD per course)	=	\$34,854 SGD (up to 30% total fee savings)
--	---	---	---	---

6 x SIM courses (\$1,907.50 SGD per course)	+	6 x UNSW courses <del>(\$4,310</del> \$3,404 SGD per course)	=	\$31,863 SGD (up to 35% total fee savings)
--	---	---	---	---

Pay as you progress one course at a time.

**Book a 15-minute chat with a student advisor for personalised advice on tuition fees.**

**Book now →**

\*Further fee information:

- Only articulating students from selected SIM courses are eligible for UNSW fee savings, and the fee savings are only applicable to selected UNSW Online master's degrees detailed in this guide.
- SIM fees are for Singapore domestic students, are inclusive of GST, and an application fee of \$109 is payable. If you reside outside of Singapore, international student fees and application fees apply and are exempt of GST.
- Fees are indicative and assume an AUD to SGD exchange rate of 0.83. Currency exchange rates may change as you progress through the program.
- Fees are subject to annual review by the universities and may increase annually, with the new fees effective from the start of each calendar year.
- Indicative fees are a guide for comparison only based on current conditions and available data. It is recommended to speak to a student advisor for personalised fee information.



# Get in touch for personalised advice

Now is the time to set yourself up for success and take advantage of this rare opportunity to graduate with a master's degree from a global top 20 university, without needing to leave home.

Book a 15-minute chat with a SIM student advisor and receive:

- Personalised advice on the articulation pathway that best suits your goals
- More information on how the online learning is designed so you can easily balance work and life
- Your award eligibility

✉ [future.student@postgradonline.simg.edu.sg](mailto:future.student@postgradonline.simg.edu.sg)

☎ 800 8528 463 | International: +65 6313 1545

**Book now →**



# Articulation pathway options

## Articulation to Master of Management

The online Master of Management program is designed for both recent graduates and early career professionals looking to build confidence, enhance credibility and unlock their potential in a new generation of modern management. The program provides students with the essentials of contemporary management, including courses such as Strategies for Disruption and Managing with Digital Technology. Theory is blended with real-world application through highly experiential teaching, business projects, and entrepreneurial practices to ensure you graduate with confidence.

You will consult with leading organisations, collaborate with teams and experience hands-on industry training, providing you with the skills employers demand to lead for success and fast-tracking your way to a rewarding and dynamic career in management.

## 4 + 8 Analytics Management Pathway

### SIM Graduate Certificate in Analytics

Complete total of 4 courses

Complete 4 courses:

- Data Analytics: Systems and Processes
- Data Privacy, Data Ethics and Governance
- Data Visualisation
- Emerging Technologies



### UNSW Master of Management

Complete total of 8 courses

Complete minimum 3 core courses:

- Business Economics
- Financial Management
- Foundations of Marketing
- Managing People and Organisations
- Managing Yourself and Others
- Law, Regulation and Ethics
- Strategies for Disruption

+ Choose up to 4 available elective courses:

- Corporate Governance and Leadership\*
- ZZBU courses

\*This course has a prerequisite: Law Regulation and Ethics

+ 1 Capstone

or

### SIM Graduate Certificate in Analytics

Complete total of 4 courses

Complete 4 courses:

- Data Analytics: Systems and Processes
- Data Privacy, Data Ethics and Governance
- Data Visualisation
- Emerging Technologies



### UNSW Master of Management

Complete total of 8 courses

Complete minimum 4 courses:

- Business Economics
- Financial Management
- Foundations of Marketing
- Law, Regulation and Ethics
- Managing People and Organisations
- Managing with Digital Technology
- Managing Yourself and Others
- Strategies for Disruption

+ Choose 1 elective course:

- Corporate Governance and Leadership\*
- ZZBU courses

\*This course has a prerequisite: Law Regulation and Ethics

+ 1 Capstone

Download SIM program guide [here](#)

Download UNSW program guide [here](#)

## 4 + 8 Business Management Pathway

### SIM Graduate Diploma in Business Management

Complete total of 4 courses

Complete 4 core courses:

- Accounting and Finance for Managers
- Emerging Technologies
- Leadership
- Marketing in a Digital World



### UNSW Master of Management

Complete total of 8 courses

Choose minimum 1 core courses:

- Analytics and Business
- Business Economics
- Law, Regulations and Ethics
- Managing People and Organisations
- Strategies for Disruption

+ Choose up to 6 available elective courses:

- Corporate Governance and Leadership\*
- ZZBU courses

\*This course has a prerequisite: Law Regulation and Ethics

+ 1 Capstone

or

### SIM Graduate Diploma in Business Management

Complete total of 4 courses

Complete 4 core courses:

- Accounting and Finance for Managers
- Leadership
- Marketing in a Digital World
- People Organisation & Teamwork



### UNSW Master of Management

Complete total of 8 courses

Choose minimum 1 core courses:

- Analytics and Business
- Business Economics
- Law, Regulations and Ethics
- Managing with Digital Technology
- Strategies for Disruption

+ Choose up to 6 available elective courses:

- Corporate Governance and Leadership\*
- ZZBU courses

\*This course has a prerequisite: Law Regulation and Ethics

+ 1 Capstone

Download SIM program guide [here](#)

Download UNSW program guide [here](#)



## 6 + 6 Business Management Pathway

### SIM Graduate Diploma in Business Management

Complete total of 6 courses

Complete 6 core courses:

- Accounting and Finance for Managers
- Data Privacy, Data Ethics and Governance
- Emerging Technologies
- Leadership
- Marketing in a Digital World
- People, Organisations and Teamwork

Download SIM program guide [here](#)



### UNSW Master of Management

Complete total of 6 courses

Complete 4 courses:

- Analytics and Business
- Business Economics
- Strategies for Disruption
- Law, Regulation and Ethics

+ Choose 1 elective course:

- Corporate Governance and Leadership\*
- ZZBU courses

\*This course has a prerequisite: Law Regulation and Ethics

+ 1 Capstone

Download UNSW program guide [here](#)

## 4 + 8 Digital Marketing Pathway

### SIM Graduate Certificate in Digital Marketing

Complete total of 4 courses

Complete 3 courses:

- Customer Behaviour and Analytics
- Data Privacy, Data Ethics and Governance
- Marketing in a Digital World

+ Choose 1 available elective course

Download SIM program guide [here](#)



### UNSW Master of Management

Complete total of 8 courses

Complete minimum 4 core courses:

- Analytics and Business
- Business Economics
- Financial Management
- Law, Regulation and Ethics
- Managing People and Organisations
- Managing with Digital Technology
- Managing Yourself and Others
- Strategies for Disruption

+ Choose up to 3 available elective courses:

- Corporate Governance and Leadership\*
- ZZBU courses

\*This course has a prerequisite: Law Regulation and Ethics

+ 1 Capstone

Download UNSW program guide [here](#)

## 4 + 8 Human Resources Management Pathway

### SIM Graduate Certificate in Human Resources Management

Complete total of 4 courses

Complete 3 courses:

- Leadership
- People, Organisations and Team Work
- Talent Acquisition and Management

+ Choose 1 available elective course

Download SIM program guide [here](#)



### UNSW Master of Management

Complete total of 8 courses

Complete minimum 3 core courses:

- Analytics and Business
- Business Economics
- Financial Management
- Foundations of Marketing
- Law, Regulations and Ethics
- Managing with Digital Technology
- Strategies for Disruption

+ Choose up to 4 available elective courses:

- Corporate Governance and Leadership\*
- ZZBU courses

\*This course has a prerequisite: Law Regulation and Ethics

+ 1 Capstone

Download UNSW program guide [here](#)

## 4 + 8 Cyber Security Pathway

### SIM Graduate Certificate in Cybersecurity Management

Complete total of 4 courses

Complete 3 courses:

- Cybersecurity Analytics and Insights
- Cybersecurity Management
- Data Privacy, Data Ethics and Governance

+ Choose 1 available elective course

Download SIM program guide [here](#)



### UNSW Master of Management

Complete total of 8 courses

Complete minimum 5 core courses:

- Analytics and Business
- Business Economics
- Financial Management
- Foundations of Marketing
- Law, Regulation and Ethics
- Managing People and Organisations
- Managing with Digital Technology
- Managing Yourself and Others
- Strategies for Disruption

+ Choose up to 2 available elective courses:

- Corporate Governance and Leadership\*
- ZZBU courses

\*This course has a prerequisite: Law Regulation and Ethics

+ 1 Capstone

Download UNSW program guide [here](#)

## 4 + 8 Information Technology Pathway

### SIM Graduate Certificate in Information Technology Management

Complete total of 4 courses

Complete 3 courses:

- Cybersecurity Management
- Data Privacy, Data Ethics and Governance
- Emerging Technologies

+ Choose 1 available elective course

Download SIM program guide [here](#)



### UNSW Master of Management

Complete total of 8 courses

Complete minimum 4 core courses:

- |                            |                                     |
|----------------------------|-------------------------------------|
| • Analytics and Business   | • Law, Regulation and Ethics        |
| • Business Economics       | • Managing People and Organisations |
| • Financial Management     | • Managing Yourself and Others      |
| • Foundations of Marketing | • Strategies for Disruption         |

+ Choose up to 3 available elective courses:

- Corporate Governance and Leadership\*
- ZZBU courses

\*This course has a prerequisite: Law Regulation and Ethics

+ 1 Capstone

Download UNSW program guide [here](#)

For more information on each program, book a 15-minute chat with a student advisor.

**Book now** →

# Articulation to Master of Human Resource Management

In a dynamic and evolving workforce, there's an increasing need for skilled human resource management (HRM) professionals who can problem-solve and drive strategies to empower people, performance and culture. The online Master of Human Resource Management is designed for aspiring future-focused leaders looking to enhance their careers and create positive work environments that empower staff and optimises business performance. Throughout the program, students will build deepened expertise in HRM strategic frameworks and problem-solving skills to transform organisations to reach success and navigate challenges in an evolving industry.

Structured to address employer demand, students will gain a competitive edge in their careers with the ability to specialise in industry growth areas.

Shape your program to align with your professional goals by choosing to specialise in:

- Diversity, Equity and Inclusion
- Leadership and Organisational Development
- Human Resource Analytics



## 4 + 8 Human Resource Management Pathway

### SIM Graduate Certificate in Human Resource Management

Complete total of 4 courses

Complete 3 courses:

- Leadership
- People, Organisations and Teamwork
- Talent Acquisition and Management

+ Choose 1 available elective course

Download SIM program guide [here](#)



### UNSW Master of Human Resource Management

Complete total of 8 courses

Complete 3 core courses:

- |                             |                                  |
|-----------------------------|----------------------------------|
| • HR Policies and Practices | • Introduction to Employment Law |
| • HR Strategies             |                                  |

+ Choose 5 elective courses:

- |   |  |
|---|--|
| • Attracting, Evaluating and Retaining Talent | • HR Information Systems                       |
| • Career Navigator                            | • Introductory Data Analysis                   |
| • Change Management                           | • Leadership Development                       |
| • Diversity, Equity and Inclusion             | • Organisational Development                   |
| • Employee Wellbeing and Engagement           | • Strategic Consulting Project                 |
| • HR Analytics                                | • Strategic Rewards and Performance Management |
| • HR Information Systems                      | • Sustainability and HR                        |

Download UNSW program guide [here](#)

## 4 + 8 Human Resource Management Pathway

### SIM Graduate Certificate in Human Resource Management

Complete total of 4 courses

Complete 3 courses:

- Leadership
- People, Organisations and Teamwork
- Talent Acquisition and Management

+ Choose 1 available elective course

Download SIM program guide [here](#)



### UNSW Master of Human Resource Management (Leadership and Organisational Development)

Complete total of 8 courses

Complete 4 core courses:

- |                             |                                  |
|-----------------------------|----------------------------------|
| • HR Policies and Practices | • Introduction to Employment Law |
| • HR Strategies             | • Organisational Development     |

+ Choose 4 elective courses:

- |                                     |  |
|-------------------------------------|--|
| • Career Navigator                  | • HR Information Systems                       |
| • Change Management                 | • Introductory Data Analysis                   |
| • Diversity Equity and Inclusion    | • Strategic Consulting Project                 |
| • Employee Wellbeing and Engagement | • Strategic Rewards and Performance Management |
| • HR Analytics*                     | • Sustainability and HR                        |

\*This course has a prerequisite: Introductory Data Analysis

Download UNSW program guide [here](#)

## 4 + 8 Human Resource Management Pathway

### SIM Graduate Certificate in Human Resource Management

Complete total of 4 courses

Complete 3 courses:

- Leadership
- People, Organisations and Teamwork
- Talent Acquisition and Management

+ Choose 1 available elective course

Download SIM program guide [here](#)



### UNSW Master of Human Resource Management (HR Analytics)

Complete total of 8 courses

Complete 6 courses:

- |                                  |                              |
|----------------------------------|------------------------------|
| • HR Policies and Practices      | • Introductory Data Analysis |
| • HR Strategies                  | • HR Analytics*              |
| • Introduction to Employment Law | • HR Information Systems     |

+ Choose 2 elective courses:

- |                                |  |
|--------------------------------|--|
| • Career Navigator             | • Strategic Rewards and Performance Management |
| • Strategic Consulting Project | • Change Management                            |

\*This course has a prerequisite: Introductory Data Analysis

Download UNSW program guide [here](#)

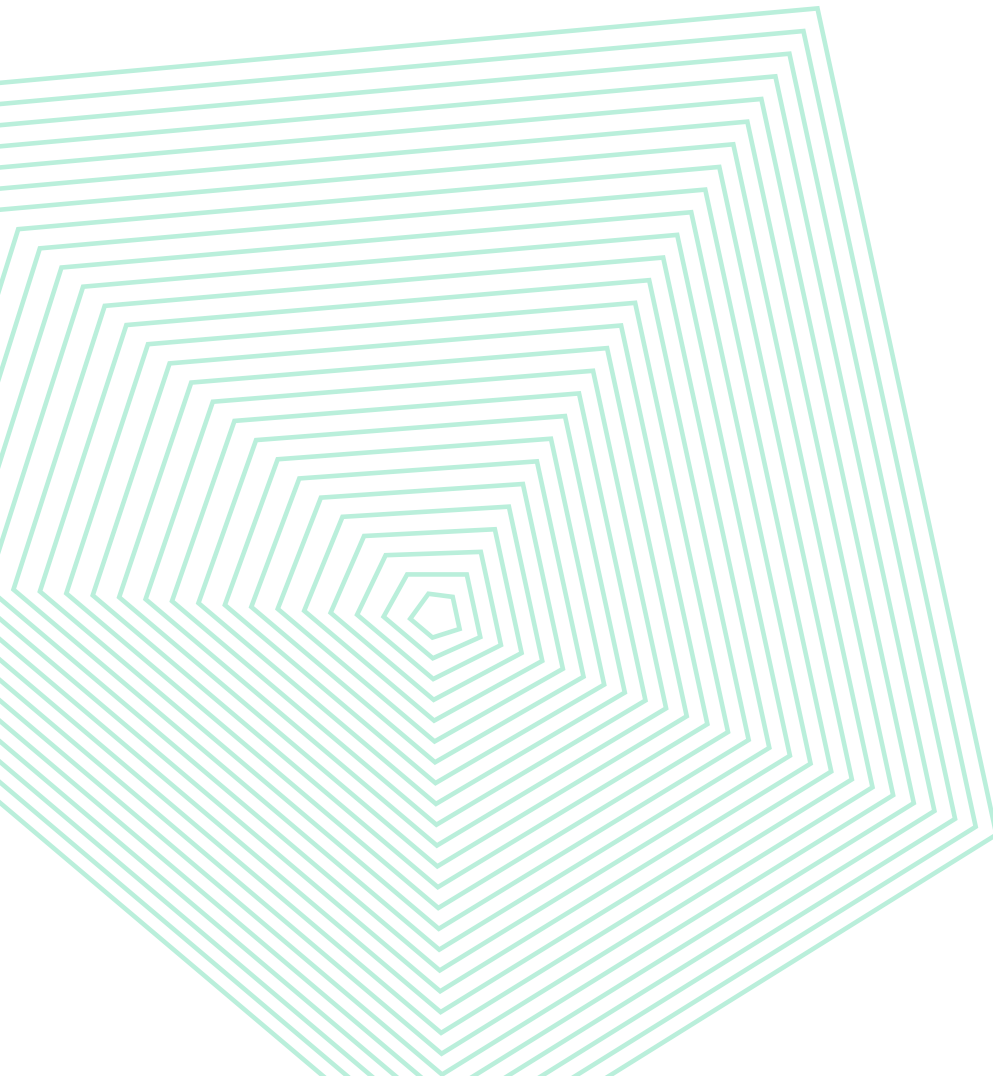
For more information on each program, book a 15-minute chat with a student advisor.

**Book now** →

# Articulation to Master of Analytics

The online Master of Analytics is a comprehensive program is designed for ambitious working professionals that are looking to develop advanced analytics capabilities and apply data-driven decisions. This program provides students with the expertise to influence business decisions, leverage career opportunities and gain skills that can be applied across all industries.

Depending on your career goals, tailor your program studies with a specialisation in either General Analytics, Human Resource Analytics or Marketing Analytics.





## 4 + 8 Analytics Pathway to General Analytics

### SIM Graduate Certificate in Analytics

Complete total of 4 courses

Complete 3 core courses:

- Data Analytics, Systems and Processes
- Data Privacy, Data Ethics and Governance
- Data Visualisation

+ Choose 1 available elective course

Download SIM program guide [here](#)



### UNSW Master of Analytics (General Analytics)

Complete total of 8 courses

Complete 5 core courses:

- Introductory Data Analysis
- Database Management
- Managing People, Analytics and Change
- Predictive Analytics\*
- Principles of Programming

+ 1 Capstone\*\*

+ Choose 2 electives courses:

- Analytics and Business
- Analytics and Consulting
- Decision Making in Analytics\*
- Financial Modelling\*
- Foundations of Marketing Analytics\*
- Human Resources Analytics\*
- Managing Customer Analytics\*
- Social Media and Digital Analytics

\*Prerequisite: Introductory Data Analysis

\*\*Prerequisite: Completion of 6 courses

Download UNSW program guide [here](#)

## 4 + 8 Digital Marketing Pathway to General Analytics

### SIM Graduate Certificate in Digital Marketing

Complete total of 4 courses

Complete 3 core courses:

- Customer Behaviour and Analytics
- Data Privacy, Data Ethics and Governance
- Marketing in a Digital World

+ Choose 1 elective course:

- Data Visualisation
- Principles of Programming (Python)



### UNSW Master of Analytics (General Analytics)

Complete total of 8 courses

Complete minimum 6 core courses:

- |  |   |
|--|---|
| • Introductory Data Analysis           | • Managing People, Analytics and Change |
| • Analytics and Business               | • Predictive Analytics*                 |
| • Data Visualisation and Communication | • Principles of Programming             |
| • Database Management                  |   |

+ 1 Capstone\*\*

Choose 1 elective course:

- |                                |                                      |
|--------------------------------|--------------------------------------|
| • Analytics and Consulting     | • Foundations of Marketing Analytics |
| • Decision Making in Analytics | • HR Analytics                       |
| • Financial Modelling          |                                      |

or

### SIM Graduate Certificate in Digital Marketing

Complete total of 4 courses

Complete 3 core courses:

- Customer Behaviour and Analytics
- Data Privacy, Data Ethics and Governance
- Marketing in a Digital World

+ Choose 1 elective course:

- People, Organisations and Teamwork
- Emerging Technologies



### UNSW Master of Analytics (General Analytics)

Complete total of 8 courses

Complete 7 core courses:

- |  |   |
|--|---|
| • Introductory Data Analysis           | • Managing People, Analytics and Change |
| • Analytics and Business               | • Predictive Analytics*                 |
| • Data Visualisation and Communication | • Principles of Programming             |
| • Database Management                  |   |

+ 1 Capstone\*\*

\*Prerequisite: Introductory Data Analysis

\*\*Prerequisite: Completion of 6 courses

Download SIM program guide [here](#)

Download UNSW program guide [here](#)

## 6 + 6 Data Science Pathway to General Analytics

### SIM Graduate Diploma in Data Science

Complete total of 6 courses

Complete 6 courses:

- Data Analytics, Systems and Processes
- Data Mining and Machine Learning
- Data Privacy, Data Ethics and Governance
- Data Visualisation
- Predictive Analytics
- Principles of Programming (Python)

Download SIM program guide [here](#)



### UNSW Master of Analytics (General Analytics)

Complete total of 6 courses

Complete 3 core courses:

- Introductory Data Analysis
- Database Management
- Managing People, Analytics and Change

+ 1 Capstone\*\*

+ Choose 3 electives courses:

- Analytics and Consulting
- Decision Making in Analytics
- Financial Modelling\*
- Foundations of Marketing Analytics\*
- Human Resources Analytics\*
- Managing Customer Analytics
- Social Media and Digital Analytics

\*Prerequisite: Introductory Data Analysis

\*\*Prerequisite: Completion of 6 courses

Download UNSW program guide [here](#)

## 4 + 8 Digital Marketing Pathway to Marketing Analytics

### SIM Graduate Certificate in Digital Marketing

Complete total of 4 courses

Complete 3 courses:

- Customer Behaviour and Analytics
- Data Privacy, Data Ethics and Governance
- Marketing in a Digital World

+ Choose 1 elective course:

- Data Visualisation
- Principles of Programming (Python)



or

### SIM Graduate Certificate in Digital Marketing

Complete total of 4 courses

Complete 3 courses:

- Customer Behaviour and Analytics
- Data Privacy, Data Ethics and Governance
- Marketing in a Digital World

+ Choose 1 elective course:

- Emerging Technologies
- People Organisations and Teamwork

Download SIM program guide [here](#)

### UNSW Master of Analytics (Marketing)

Complete total of 8 courses

Complete 2 courses:

- Foundations of Marketing Analytics
- Capstone\*\*

+ Choose minimum 5 core courses:

- Introductory Data Analysis
- Analytics and Business
- Data Visualisation and Communication
- Database Management
- Managing People, Analytics and Change
- Predictive Analytics\*
- Principles of Programming

+ Choose 1 elective course:

- Analytics and Consulting
- Decision Making in Analytics
- Financial Modelling
- HR Analytics

### UNSW Master of Analytics (Marketing)

Complete total of 8 courses

Complete 2 courses:

- Foundations of Marketing Analytics
- Capstone

+ Choose 6 core courses:

- Introductory Data Analysis
- Analytics and Business
- Data Visualisation and Communication
- Database Management
- Managing People, Analytics and Change
- Predictive Analytics\*
- Principles of Programming

\*Prerequisite: Introductory Data Analysis

\*\*Prerequisite: Completion of 6 courses

Download UNSW program guide [here](#)



## 6 + 6 Data Science Pathway to Marketing Analytics

### SIM Graduate Diploma in Data Science

Complete total of 6 courses

Complete 6 courses:

- Data Analytics, Systems and Processes
- Data Mining and Machine Learning
- Data Privacy, Data Ethics and Governance
- Data Visualisation
- Predictive Analytics
- Principles of Programming (Python)

Download SIM program guide [here](#)



### UNSW Master of Analytics (Marketing)

Complete total of 6 courses

Complete 4 courses:

- |                              |                                       |
|------------------------------|---------------------------------------|
| • Introductory Data Analysis | • Foundations of Marketing Analytics* |
| • Database Management        | • Social Media and Digital Analytics  |

+ 1 Capstone\*\*

+ Choose 1 elective course:

- |                            |                              |
|----------------------------|------------------------------|
| • Analytics and Consulting | • Human Resources Analytics* |
| • Financial Modelling*     |                              |

\*Prerequisite: Introductory Data Analysis

\*\*Prerequisite: Completion of 6 courses

Download UNSW program guide [here](#)

## 4 + 8 Analytics Pathway to Human Resource Analytics

### SIM Graduate Certificate in Analytics

Complete total of 4 courses

Complete 3 courses:

- Data Analytics, Systems and Processes
- Data Privacy, Data Ethics and Governance
- Data Visualisation

+ Choose 1 available elective course

Download SIM program guide [here](#)



### UNSW Master of Analytics (Human Resource Analytics)

Complete total of 8 courses

Complete 7 courses:

- |                              |   |
|------------------------------|---|
| • Introductory Data Analysis | • Managing People, Analytics and Change |
| • Database Management        | • Predictive Analytics*                 |
| • HR Information Systems     | • Principles of Programming             |
| • Human Resource Analytics*  |   |

+ Choose 1 elective course:

- |   |  |
|---|--|
| • Attracting, Evaluating and Retaining Talent | • Managing Yourself and Others                 |
| • Career Navigator                            | • Organisational Development                   |
| • Change Management                           | • Strategic Consulting Project                 |
| • Diversity, Equity and Inclusion             | • Strategic Rewards and Performance Management |
| • Employee Wellbeing and Engagement           | • Sustainability and HR                        |
| • HR Policies and Practice                    |  |

\*Prerequisite: Introductory Data Analysis

Download UNSW program guide [here](#)

## 6 + 6 Data Science Pathway to Human Resource Analytics

### SIM Graduate Diploma in Data Science

Complete total of 6 courses

Complete 6 courses:

- Data Analytics, Systems and Processes
- Data Mining and Machine Learning
- Data Privacy, Data Ethics and Governance
- Data Visualisation
- Predictive Analytics
- Principles of Programming

Download SIM program guide [here](#)



### UNSW Master of Analytics (Human Resource Analytics)

Complete total of 6 courses

Complete 5 courses:

- |                              |   |
|------------------------------|---|
| • Introductory Data Analysis | • Human Resources Analytics*            |
| • Database Management        | • Managing People, Analytics and Change |
| • HR Information Systems     |   |

+ Choose 1 elective course:

- |   |                                      |
|---|--------------------------------------|
| • Attracting, Evaluating and Retaining Talent | • Leadership Development             |
| • Career Navigator                            | • Managing Pay and Performance       |
| • Change Management                           | • Managing Yourself and Others       |
| • Diversity, Equity and Inclusion             | • Organisational Development         |
| • Employee Wellbeing and Engagement           | • Strategic Consulting Project       |
| • Human Resources Policies and Practice       | • Sustainability and Human Resources |

\*Prerequisite: Introductory Data Analysis

Download UNSW program guide [here](#)

For more information on each program, book a 15-minute chat with a student advisor.

**Book now** →

# Articulation to Master of Data Science

It takes sophisticated thinking to find simple answers that lie beneath layers of increasingly complex, interwoven webs of data. More and more, businesses are turning to people with the advanced technical and mathematical skills to unpick complexities and make sense of the numbers. The demand for a true data scientist has never been greater.

The online Master of Data Science explores more ways to organise, identify, analyse and ultimately use data to inform strategies, redefine ambiguous questions and find answers that make a genuine impact. From advanced statistics and machine learning, programming and database systems, to strategic decision making, the skills you develop in this program apply across all fields and industries.

## How is data science different from analytics?

Analytics is primarily focused on understanding datasets and gleaning insights that can be turned into actions. On the other hand, data science is focused on building, cleaning, and organising datasets.

Need advice on whether you should study data science or analytics? Our student advisors are ready to help. Book a 15-minute chat.

**Book now →**

## 4 + 8 Analytics Pathway

### SIM Graduate Certificate in Analytics

Complete total of 4 courses

Complete 3 courses:

- Data Analytics, Systems and Processes
- Data Privacy, Data Ethics and Governance
- Data Visualisation

+ Choose 1 available elective course

Download SIM program guide [here](#)



### UNSW Master of Data Science

Complete total of 8 courses

Complete 5 core courses:

- |                                      |   |
|--------------------------------------|---|
| • Data Mining and Machine Learning** | • Regression Analysis for Data Scientists*^ |
| • Foundations of Data Science        | • Statistical Inference for Data Scientists |
| • Principles of Programming          |   |

+ 1 Capstone Data Science Project^^

+ Choose any 2 elective courses:

- |  |   |
|--|---|
| • Bayesian Inference and Computation for Data Scientists | • Multivariate Analysis for Data Scientists*^ |
| • Big Data Management**                                  | • Neural Networks, Deep Learning**            |
| • Database Systems                                       | • Strategic Decision Making                   |
| • Decision Making in Analytics*                          |   |

\*Prerequisite: Foundations of Data Science

^Prerequisite: Statistical Inference for Data Scientists

\*\*Prerequisite: Principles of Programming

^^Prerequisite: Completion of 4 courses

Download UNSW program guide [here](#)

## 4 + 8 Data Science Pathway

### SIM Graduate Diploma in Data Science

Complete total of 4 courses

Complete 4 courses:

- Data Analytics, Systems and Processes
- Data Privacy, Data Ethics and Governance
- Data Visualisation
- Principles of Programming (Python)

Download SIM program guide [here](#)



### UNSW Master of Data Science

Complete total of 8 courses

Complete 4 core courses:

- |  |  |
|--|--|
| • Foundations of Data Science                    | • Regression Analysis for Data Scientists <sup>^</sup> |
| • Data Mining and Machine Learning <sup>**</sup> | • Statistical Inference for Data Scientists            |

+ 1 Capstone Data Science Project<sup>^^</sup>

+ Choose 3 elective courses:

- |  |  |
|--|--|
| • Bayesian Inference and Computation for Data Scientists | • Multivariate Analysis for Data Scientists <sup>^</sup> |
| • Big Data Management <sup>**</sup>                      | • Neural Networks, Deep Learning <sup>**</sup>           |
| • Database Systems                                       | • Strategic Decision Making                              |
| • Decision Making in Analytics <sup>*</sup>              |  |

<sup>\*</sup>Prerequisite: Foundations of Data Science

<sup>^</sup>Prerequisite: Statistical Inference for Data Scientists

<sup>\*\*</sup>Prerequisite: Principles of Programming

<sup>^^</sup>Prerequisite: Completion of 4 courses

Download UNSW program guide [here](#)

## 6 + 6 Data Science Pathway

### SIM Graduate Diploma in Data Science

Complete total of 6 courses

Complete 6 courses:

- Data Analytics, Systems and Processes
- Data Mining and Machine Learning
- Data Privacy, Data Ethics and Governance
- Data Visualisation
- Predictive Analytics
- Principles of Programming (Python)

Download SIM program guide [here](#)



### UNSW Master of Data Science

Complete total of 6 courses

Complete 3 core courses:

- Foundations of Data Science
- Statistical Inference for Data Scientists
- Regression Analysis for Data Scientists<sup>\*^</sup>

+ 1 Capstone Data Science Project<sup>^^</sup>

+ Choose 2 electives courses:

- |  |   |
|--|---|
| • Bayesian Inference and Computation for Data Scientists | • Multivariate Analysis for Data Scientists <sup>**</sup> |
| • Big Data Management <sup>**</sup>                      | • Neural Networks, Deep Learning <sup>**</sup>            |
| • Database Systems                                       | • Strategic Decision making                               |

<sup>\*</sup>Prerequisite: Foundations of Data Science

<sup>^</sup>Prerequisite: Statistical Inference for Data Scientists

<sup>\*\*</sup>Prerequisite: Principles of Programming

<sup>^^</sup>Prerequisite: Completion of 4 courses

Download UNSW program guide [here](#)

For more information on each program, book a 15-minute chat with a student advisor.

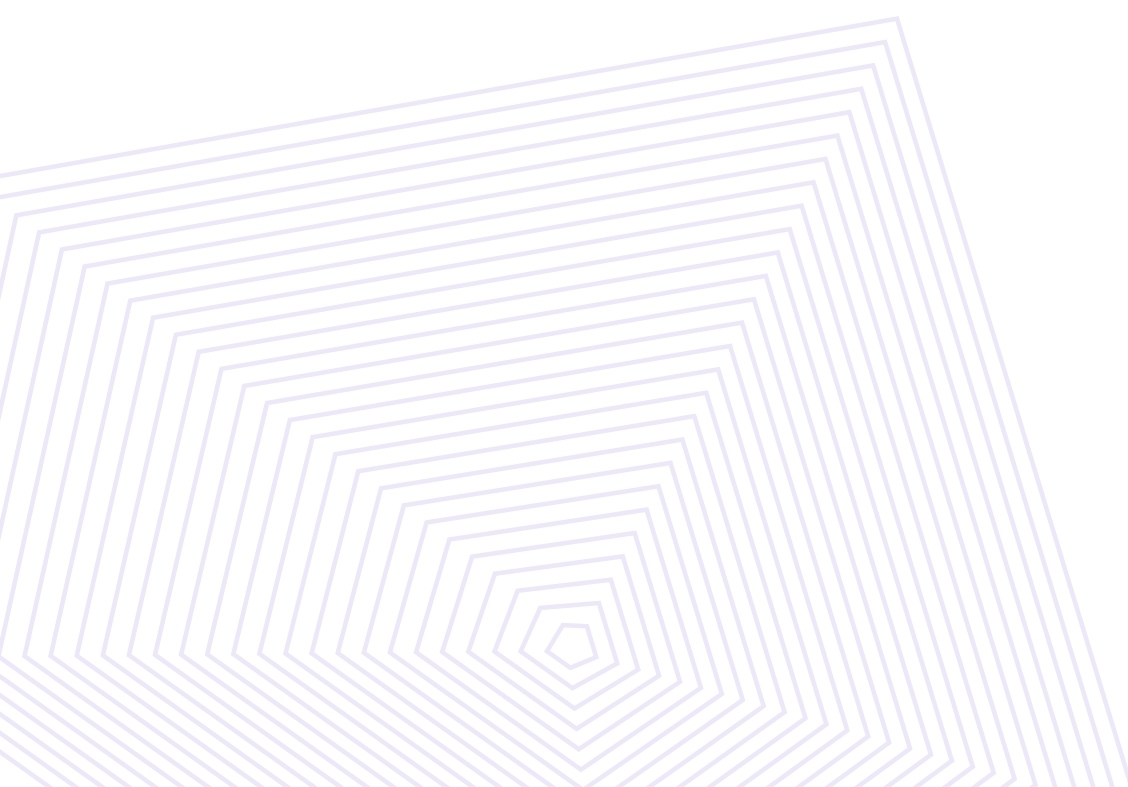
**Book now** →



# Articulation to Master of Cybersecurity Management (Security Management and Leadership)

The online Master of Cyber Security is designed for ambitious professionals who want to become technical experts, or leaders, leveraging lucrative career opportunities within the rapidly growing field of cyber. The program will provide you with a comprehensive understanding of both the current state of and future directions of cyber security. You'll gain the immediately applicable advanced knowledge and technical skills to securely identify, manage and respond to privacy risks across large datasets, and current best practice in a changing global environment.

This program has been developed in collaboration with Australian Defence Force Academy (ADFA) and UNSW Canberra, which is how to the UNSW Institute for Cyber Security – the largest concentration of research and tertiary education in the field of cyber security in the Southern Hemisphere.



## 4 + 8 Cyber Security Management Pathway

### SIM Graduate Certificate in Cyber Security

Complete total of 4 courses

Complete 3 courses:

- Cybersecurity Analytics and Insights
- Cybersecurity Management
- Data Privacy, Data Ethics and Governance

+ Choose 1 available elective course

Download SIM program guide [here](#)



### UNSW Master of Cyber Security (Security Management and Leadership)

Complete total of 8 courses

Complete 2 courses:

- Cyber Security Ethics
- Principles of Security Engineering

+ Choose minimum 3 core courses:

- Cyber and the Law
- Cyber Risk and Resilience
- Cyber Operations
- Cyber Threats and Crimes

+ 1 Capstone<sup>^^</sup>

+ Choose 2 elective courses:

- Advanced Penetration Testing<sup>^</sup>
- Cloud Security
- Digital Forensics<sup>\*\*</sup>
- Fundamentals of Coding: C and Assembler
- Operating System Fundamentals in Security<sup>\*</sup>
- Penetration Testing
- Reverse Engineering<sup>\*\*</sup>

<sup>^</sup>Prerequisite: Penetration Testing

<sup>\*</sup>Prerequisite: Fundamentals of Coding: C and Assembler

<sup>\*\*</sup>Prerequisite: Operating System Fundamentals in Security

<sup>^^</sup>Prerequisite: Completion of 4 courses

Download UNSW program guide [here](#)

## 4 + 8 Information Technology Management Pathway

### SIM Graduate Certificate in Information Technology Management

Complete total of 4 courses

Complete 3 courses:

- Data Privacy, Data Ethics and Governance
- Cybersecurity Analytics and Insights
- Cybersecurity Management

+ Choose 1 available elective course

Download SIM program guide [here](#)



### UNSW Master Cybersecurity (Security Management and Leadership)

Complete total of 8 courses

Complete 2 courses:

- Cyber Security Ethics
- Principles of Security Engineering

+ Choose minimum 3 courses:

- Cyber and the Law
- Cyber Risk and Resilience
- Cyber Operations
- Cyber Threats and Crimes

+ 1 Capstone^^

+ Choose 2 elective courses:

- Advanced Penetration Testing^
- Cloud Security
- Digital Forensics\*\*
- Fundamentals of Coding: C and Assembler
- Operating System Fundamentals in Security\*
- Penetration Testing
- Reverse Engineering\*\*

^Prerequisite: Penetration Testing

\*Prerequisite: Fundamentals of Coding: C and Assembler

\*\*Prerequisite: Operating System Fundamentals in Security

^^Prerequisite: Completion of 4 courses

Download UNSW program guide [here](#)

For more information on each program, book a 15-minute chat with a student advisor.

**Book now** →